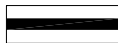


Key



Area of search: Policy MWP7

Tees Valley Joint Minerals and Waste Development Plan Documents - Policies and Sites

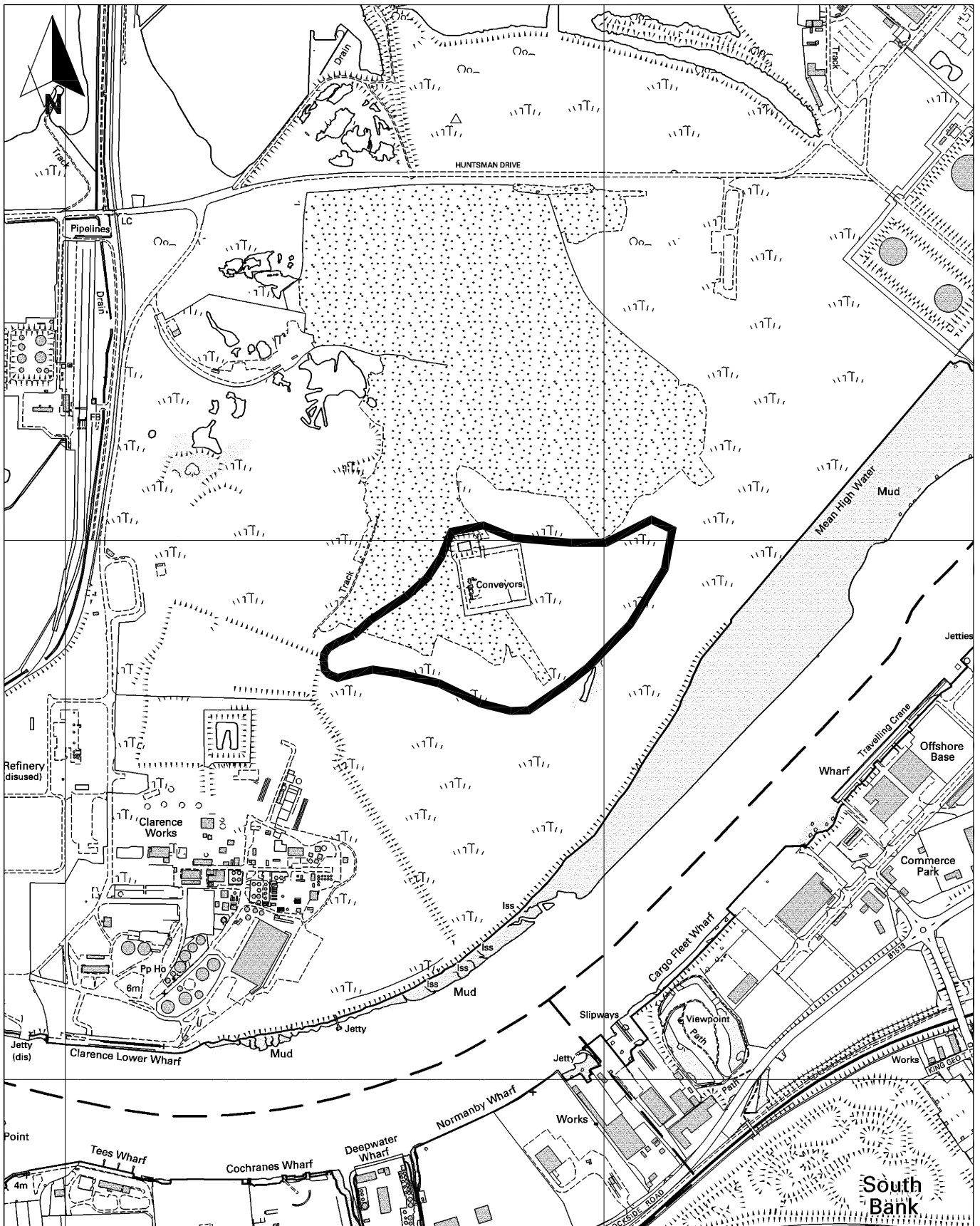
Stockton South Household Waste Recycling Centre
Area of Search, Stockton-on-Tees

0 km 3 km

Scale 1:50,000 @ A4

June 2009
 18980-R42c.dwg pattn

Entec

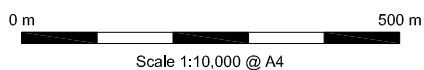


Key

 Site location: Policies MWP5, MWP8(b)

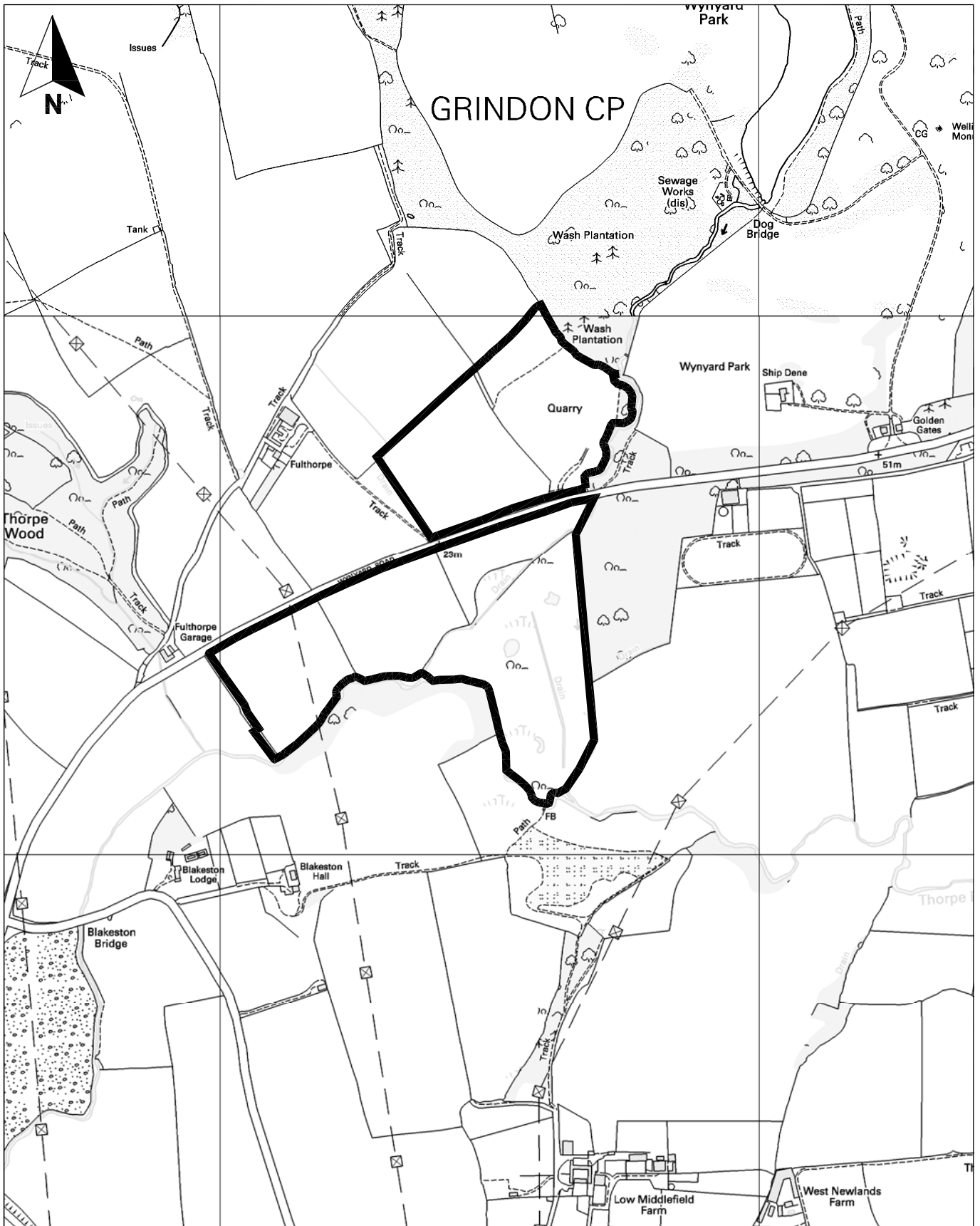
Tees Valley Joint Minerals and Waste
Development Plan Document
Policies and Sites

Port Clarence, Stockton-on-Tees
Grid Ref. NZ 517 218

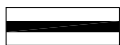


April 2009
18980-r48.dwg pattn

Entec



Key



Site location: Policy MWP8(a)

Tees Valley Joint Minerals and Waste
Development Plan Document -
Policies and Sites

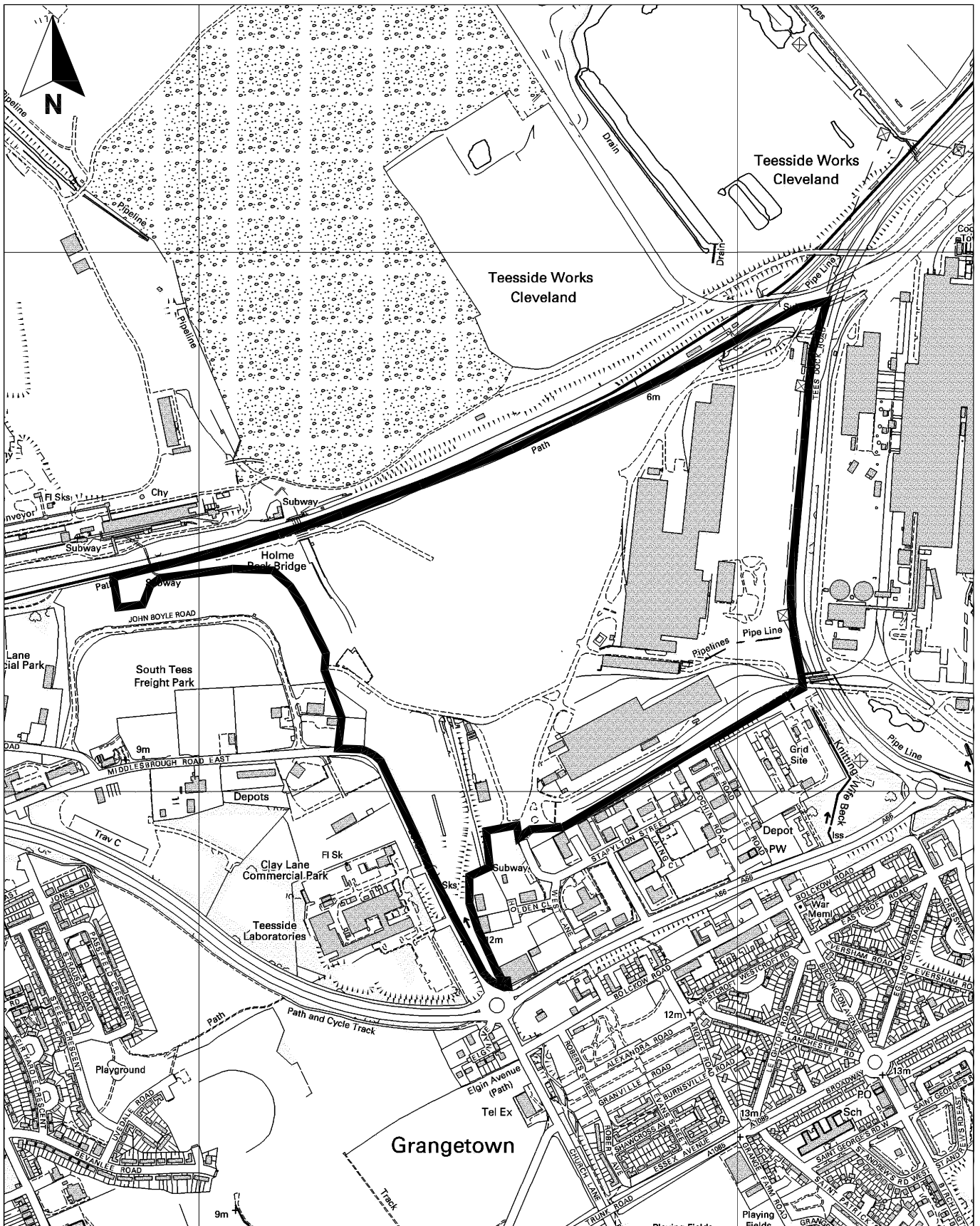
Stockton Quarry, Stockton-on-Tees
Grid Ref. NZ 415 246



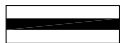
Scale 1:10,000 @ A4

April 2009
18980-r50.dwg pattn

Entec



Key



Site location: Policies MWP6, MWP8(b)

Tees Valley Joint Minerals and Waste
Development Plan Documents
Policies and Sites

**South Tees Eco-Park,
Redcar and Cleveland**
Grid Ref. NZ 543 213



Scale 1:10,000 @ A4

April 2009
18980-r49.dwg pattn

Entec